

AIS-CTR_X

Affordable, robust and high performance AIS Class-B Transponder



INCREASE YOUR SAFETY, SEE AND BE SEEN

AIS-CTR_X Class B AIS Transponder

The AIS-CTR_X is the latest product for pleasure crafts and smaller commercial vessels. It brings enhanced safety and a whole new dimension to navigation. The high performance, low cost and highly robust AIS Class-B transponder provides both reception and transmission of AIS data to a fraction of the cost of a conventional Class-A transponder.



Transmit and Receive

The AIS-CTR_X Class-B transponder device ensures that you see and are seen by other AIS fitted vessels and coast stations.

Silent mode

The AIS-CTR_X can with a simple push of a button be made "silent", meaning that the unit will only receive AIS data from other AIS transponders.

Water Resistance

Robust, coated aluminum case, to ensure the unit is able to operate in the harshest environments. IEC60945—Category C.

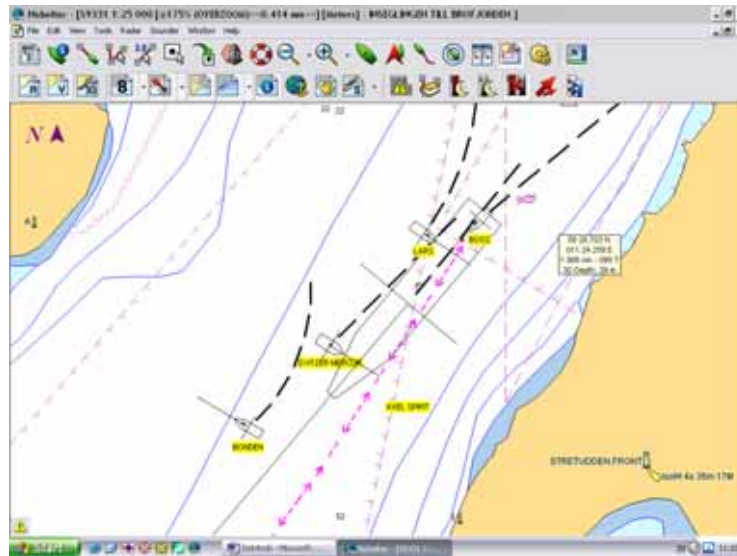
Internal GPS

High performance 16-channel GPS prepared for SBAS services (MSAT, EGNOS and WAAS)



The AIS-CTRX is an Automatic Identification System (AIS) Class B transponder with both receiving and transmitting capabilities. The AIS-CTRX makes it possible to navigate and display all vessels equipped with AIS transponders and at the same time be seen by other vessels equipped with Class B adapted AIS equipment. The AIS-CTRX is transmitting its position once every 30 seconds (or more often when asked to do so) to reports its identity, position, speed and course over ground etc. to announce its existence.

The AIS-CTRX gives at the same time an accurate position via the built in GPS. It will bring enhanced safety and a whole new dimension to navigation. AIS-CTRX high quality, low cost Class-B AIS transponder provides the same functionality and performance as a merchant vessel system but at a fraction of the cost.



Example how AIS can be presented in a Electronic Chart System

Technical specifications

Physical

L x W x H: 190 x 135 x 90 (mm)
Weight : 1650 g

Electrical

Power supply range: 12 VDC (-20% - +30%)
Power consumption : 6 W (average)

Data Interfaces

RS232: 38.4kbaud bi-directional
RS422 (NMEA) 38.4kbaud bi-directional

Connectors:

VHF Antenna (BNC)
GPS Antenna (TNC)
Power/Data

Operating temperature: -25°C to +55°C

Environmental: IEC 60945 - Cat. C

VHF Transceiver

One transmitter and two receivers

Frequency : 156.025 to 162.025 MHz
Output power: 2 Watts (33 dBm ± 1.5 dB)
Channel bandwidth: 25 kHz
Sensitivity : better than -107 dBm
Antenna impedance : 50 ohms

GPS Receiver (AIS internal)

16 Channel (WAAS, EGNOS, MSAT support)

Position accuracy: < 3 meters CEP (GPS)
< 2 meters CEP (DGPS)

Compliant with following standards as applicable:

IEC 62287, IEC 61108-1, IEC 60945, IEC 61162-1
ITU-R M.1371-2, ITU-R M.493-9, ITU-R M.825-3

The AIS-CTRX requires both a VHF and a GPS antenna

Point Distribution Ltd
www.pointdistribution.co.uk
sales@pointdistribution.co.uk
+44(0)1494677751

True Heading Dealer



Vendevägen 90
182 32 DANDERYD
SWEDEN
Phone +46 8 6222660
Fax +46 8 54593910
info@trueheading.se



www.trueheading.se